

Susceptibility Measurements on
Small Al Grains
Measured with a SQUID magnetometer

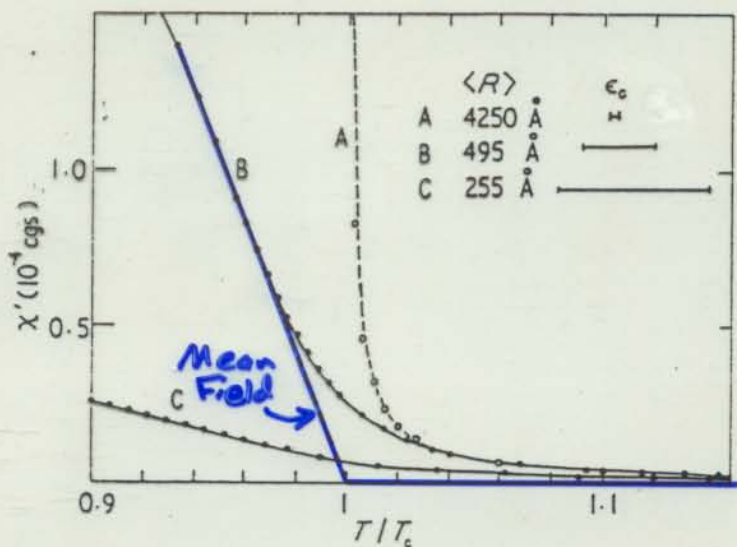


Figure 3. Measured diamagnetic susceptibility of aluminium powders with differing mean particle sizes. The full curves are the GL theory including fluctuation effects, average particle distributions (after Buhrman and Halperin 1977)

$$\chi = -\frac{1}{4\pi} \frac{\mu_0 R^2 \langle |H|^2 \rangle (e^*)^2}{m^*}$$

$$J_{AL} = 16000 \text{ A}$$

W. J. Skocpol and M. Tinkham
Rep. Prog. Phys. 38, 1049 (1975).